



HUE HD Pro User Guide



## Thank you

Thank you for purchasing the HUE HD Pro. We hope you enjoy using this multi-purpose camera.

Please visit our website for additional information, FAQs, and our full range of products.

We're always delighted to receive feedback about how you use your HUE products and reviews are most welcome.

We're here to help if you need us.

With thanks,

**The HUE team**

**FR** Pour une version française de ce guide, voir le lien ci-dessous.

**DE** Weitere Informationen finden Sie unter dem untenstehenden Link.

**ES** Para obtener una versión en español de esta guía, consulte el siguiente enlace.

**IT** Per maggiori informazioni, consultare il nostro sito web al link sottostante

**JA** 詳細については、以下のリンクをご参照ください

[huehd.com/help](http://huehd.com/help)

### GETTING STARTED (PLUG AND PLAY)

The HUE HD Pro camera can be used with Windows, macOS, Chrome OS, and any other operating system which supports plug and play devices. It can be used with any application that recognizes a USB camera.

You may need to go to your computer's [Privacy](#) settings to allow the camera to be used.

Once that is done simply plug your camera in and open your computer's built-in [Camera](#) application. For Mac users, this is called [QuickTime](#).

Choose your camera from the list of available devices.

### VIDEO CONFERENCING

The HUE HD Pro will work with Zoom, Microsoft Teams, Google Meet, and any other software that recognizes USB video devices or webcams. Please visit [huehd.com/tutorials](http://huehd.com/tutorials) for more information.

### GETTING STARTED (HUE INTUITION)

The purpose-built HUE Intuition software can be downloaded from the HUE website.

[huehd.com/new](http://huehd.com/new)

There is no CD included with this version.

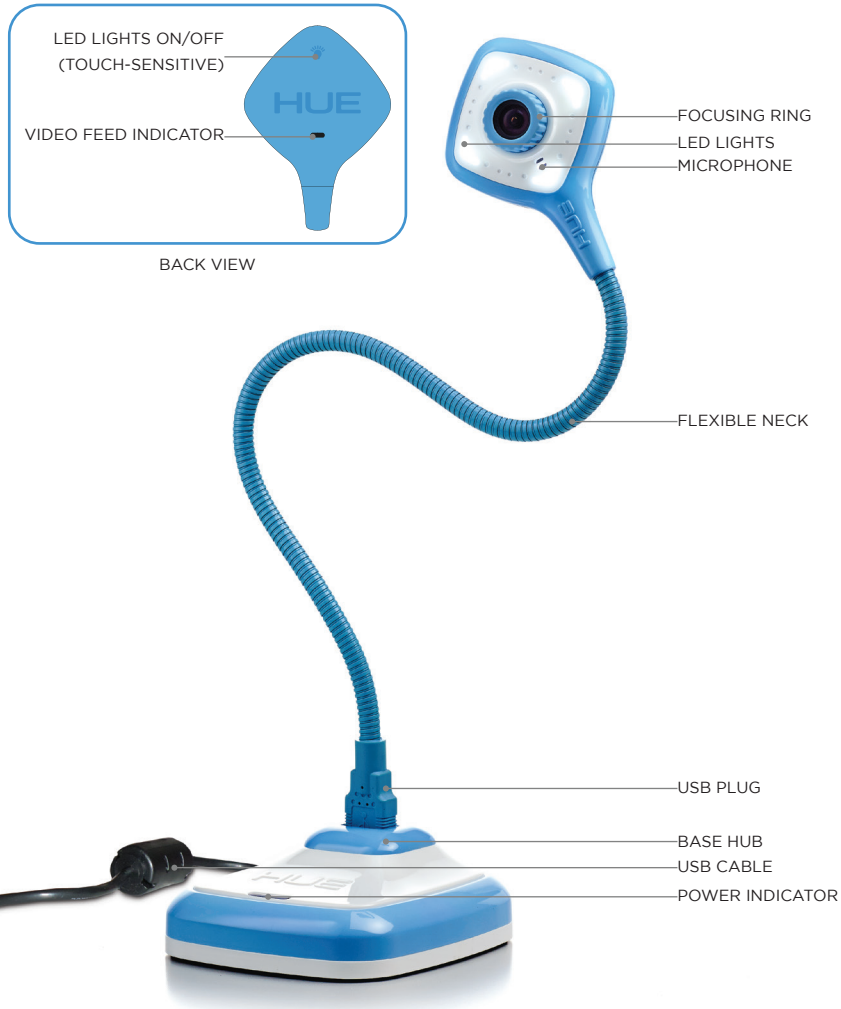
The software allows you to:

- Record video and sound
- Save movies locally or online
- Annotate and save images
- Take snapshots
- Take multiple images over time

Your license allows for multiple installations of HUE Intuition so you can use your camera at home and at work.

Please visit [huehd.com/tutorials](http://huehd.com/tutorials) and [huehd.com/faqs](http://huehd.com/faqs) for help.

# Setting up your camera



Simply connect the flexible neck to the base then plug in the USB cable, and you're ready to go.

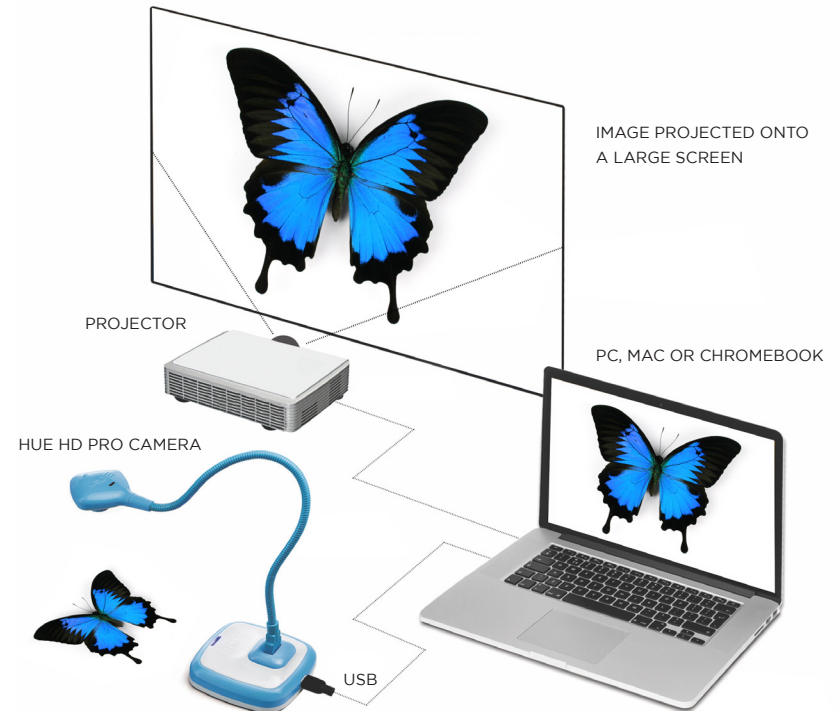
You can connect the camera base to the computer by the USB cable, or unplug the camera from its base and connect it directly to a USB port by its flexible neck.

The base is simply an easy way to have the camera stand upright on its own on a desktop or other flat surface.

Once plugged into your computer the power indicator LED on the base will light up, confirming that the camera is receiving power from your computer.



*The camera should be recognized by the camera applications available on your computer, without the need to install any extra software.*



# Using HUE Intuition

The tabs on the right side of the HUE Intuition window let you choose your camera mode.

- **Video** mode is for recording video and taking snapshots. The main menu button will change to orange when that window is in use.
- **Playback** is where you can review, save and share your video.
- **Scan** mode is optimized for scanning documents.
- **Document Camera** enables you to annotate, flip and mirror the live video stream during presentations.
- **Image Capture** lets you take still pictures automatically, by key press or on movement.
- HUE Intuition can be configured in the **Settings** tab.
- You can find the software version and our contact information on the **About** tab.
- **Hide Controls** makes your video area larger by hiding all of the on-screen buttons and borders.
- **Full Screen/Windowed** allows you to switch between full screen and windowed display. Pressing the Escape (Esc) key will restore the default view.

## VIDEO

## PLAYBACK

## SCAN

## DOCUMENT CAMERA

## IMAGE CAPTURE

## SETTINGS

## ABOUT

*Please note that Mac users will find this information in the About HUE Intuition menu and Settings screen.*

## HIDE CONTROLS (F12)

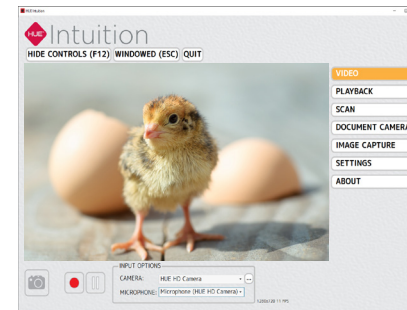
## FULL SCREEN (CTRL-F)

## VIDEO

In the Video tab you can record video with sound. You can also take snapshots using the button in the bottom left of the window.

First of all, ensure that you have selected the camera and microphone that you want to use in the **Input Options** box.

Click the red button to start recording your video. The red Record button will change to a square.



When you're finished, click the same button again to Stop recording. You'll be taken to the **Playback** tab automatically.



*Use the Pause button to pause your recording at any time.*

*Note: On some computers, you can adjust the settings by clicking the button next to the dropdown menu.*

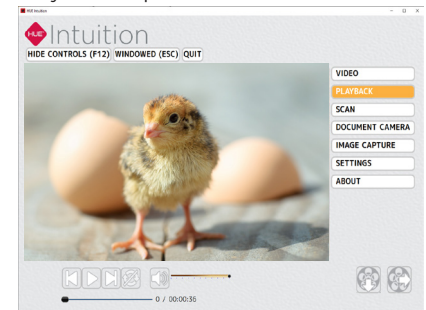
## PLAYBACK

After recording a video, use the Playback tab to review, save and share your work.

The buttons under the video panel let you **Rewind**, **Play**, **Pause**, **Fast-forward** and **Loop** your recorded video.

You can also adjust the sound and mute the audio using the volume controls.

The buttons in the bottom right let you choose to **Save** your video to a folder on your computer or **Share** it online.

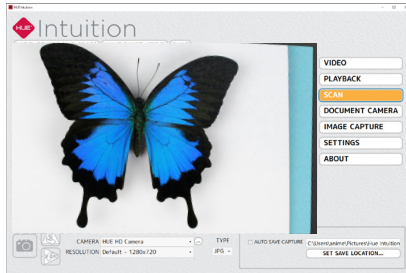


If you choose to share your video on YouTube, you'll need to enter your login credentials and video settings on the screen which pops up. It may take a few minutes for the video to finish uploading.

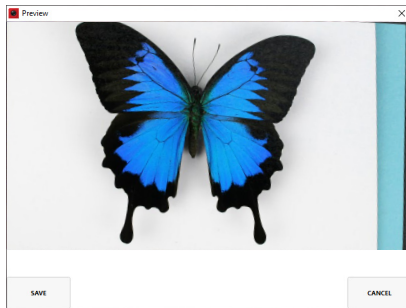
*Note: Your saved videos will play back in standard video applications such as Windows Media Player, VLC and QuickTime. You don't have to open HUE Intuition again to watch them.*

## SCAN

This function allows you to save still images in different formats. It's suitable for scanning a large number of documents quickly using your HUE camera.



You can flip or mirror your images vertically and horizontally.



If you want to review each scanned image before saving it, uncheck the **Auto Save Capture** box in the bottom right of the screen.

## DOCUMENT CAMERA

This feature lets you annotate, flip and mirror the live video stream during presentations. A snapshot of the annotated video stream can then be saved to your computer for future use.

To choose a tool, click the icon and move your cursor. The tool will turn orange, indicating that it has been selected.

There are some aesthetic differences between the on-screen buttons in Document Camera mode in the current versions of HUE Intuition for Windows and HUE Intuition for macOS.

The features are exactly the same on macOS version, despite the different icons.

**Delete:** Use the eraser to delete anything you have added to the image. If you want to clear all of your annotations at once, use the button in the bottom right of the toolbox.

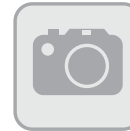


Windows version



macOS version

**Snapshot:** Use the camera button to take a picture at any time.

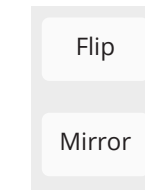


Windows & macOS versions

**Flip or mirror:** The live video can be flipped vertically or horizontally, without having to move the camera.

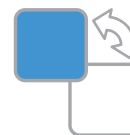


Windows version



macOS version

**Color swatches:** Use the colour picker to choose your color for annotations and filling/outlining shapes.

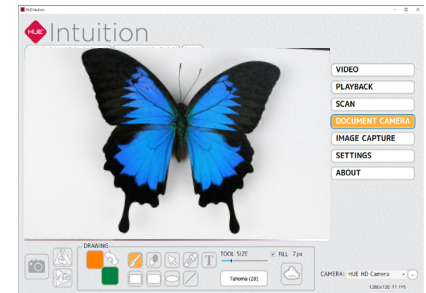


Windows version

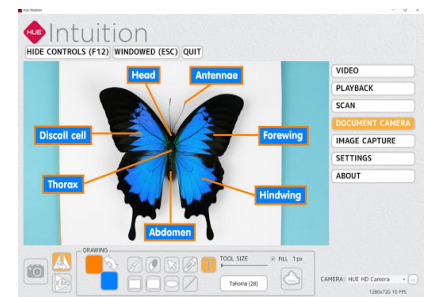


macOS version

You can add **Text** using the **T** button. Change the font or size by using the slider and list adjacent to the button. The pointer tool (arrow) can be used to select an existing text box if you want to make changes.



Add shapes and change the fill and border colors using the color swatches. If you want to create a shape which is already filled with a solid color, check the **Fill** box.



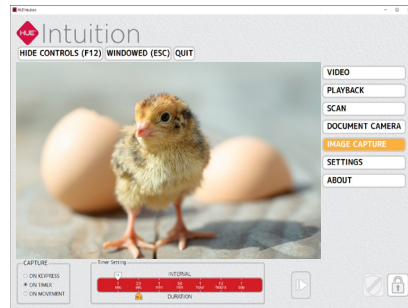


## IMAGE CAPTURE

Use this mode to capture still images. There are three different capture methods you can choose from:

**On Keypress:** Choose when you want to take each picture by pressing a key on your keyboard.

**On Timer:** Set the timer to take pictures automatically. The Interval is the gap between each picture, while the Duration is the period over which you want to take pictures. For example, if you want to capture the growth of fungus in a petri dish, you could set the timer to take a picture at an Interval of every minute for a Duration of 12 hours. If you want to record an activity in your classroom, you could set the camera to record an image every 30 seconds (Interval) for an hour (Duration).



**On Movement:** This mode captures an image each time the camera detects movement - a bit like a security camera.

Select your capture method and click the **Capture** button to start.

You can stop recording at any time by pressing the same button again.

Its icon will change to a square once capture has begun.



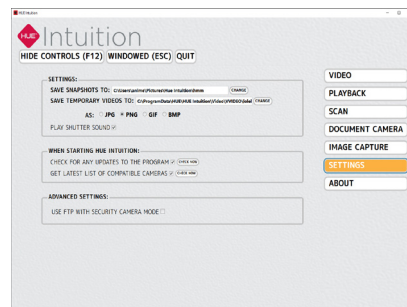
*Advanced users can configure the software to upload the captured images to an FTP server automatically if it's necessary to monitor the camera online.*



## SETTINGS

The Settings tab allows you to determine where your pictures and videos will be saved, and to select the format you want for your pictures.

The default settings should be suitable for most users.



## Does HUE HD Pro support regular video conferencing software?

The camera works with a wide range of video conferencing software. Any software that is designed to work with a USB camera should work using the HUE HD Pro as its video input source, from Zoom, Microsoft Teams, Google Meet (Hangouts) to FaceTime and Skype™.

Tutorials for the most popular video conferencing apps can be found on the HUE website, along with instructions for flipping and controlling the live video.

## How do I video chat with HUE HD Pro?

Pick which video software you wish to use, download the application from their website and follow their setup instructions. Make sure you select HUE as your camera and microphone in the app's settings, then you're ready to chat!

## How do I download HUE Intuition?

Please go to [huehd.com/new](http://huehd.com/new) to download the latest version.

## How do I install HUE Intuition on a school network?

Command line switches for silent installation can be found on our website in the FAQ section: [huehd.com/ufaqs/install-hue-intuition-silently-windows-network/](http://huehd.com/ufaqs/install-hue-intuition-silently-windows-network/)

## What is my HUE Intuition activation code?

The back page of this guide includes your unique HUE Intuition activation code, which can be used to register your software for support and updates, and to activate older versions of HUE Intuition. Your license can be registered through your free [huehd.com](http://huehd.com) account.

If you are using HUE Intuition 2.0 or later (for Windows or macOS 10.9+), you will not require the activation code for installation. Please keep a record of your code in case you need technical support with your software.

## How do I use the camera without HUE Intuition?

The HUE HD Pro works with video streaming software like AMCap, available as a free download from our website for those users who are unable to install software such as HUE Intuition.

Windows 10 users can also use the built-in Microsoft [Camera](#) app with their HUE HD Pro Camera.

If you're using macOS or Mac OS X 10.6 or later, we recommend the built-in version of [QuickTime](#) for recording video.

## FAQs

### How do I focus the HUE HD Pro camera?

Our cameras use **manual focus**, which means you have to turn the ring around the camera's lens until the picture is sharp. This means that if you move the camera closer or farther away, the picture may become blurry until you turn the ring again to bring the image back into focus.

### What do I do if my camera isn't working?

Many issues can be resolved by following the FAQs and Tutorials in the Support section of the HUE website. Your HUE camera is covered under a 2 year warranty so please provide your proof of purchase if you need to make a warranty claim.

### Is HUE Intuition compatible with Chrome OS?

The HUE Intuition software is for Windows and macOS. Please visit [chrome.huehd.com](http://chrome.huehd.com) if you need help using your HUE HD Pro camera with your Chrome OS device.

### Where is my software CD?

As many computers no longer include CD drives, the pack no longer includes a CD. HUE Intuition is now available as a download from the HUE website.

Download the software here:  
[huehd.com/new](http://huehd.com/new)

### Does the HUE HD Pro camera conform to RoHS and CE requirements?

Yes. The HUE HD Pro camera has been screened in accordance with RoHS Directive (2011/65/EU) and undergone EMC (Electromagnetic Compatibility) testing pursuant to EMC Directive 2014/30/EU, meeting the requirements of EN 55032: 2015, EN 61000-3-2: 2014, EN 61000-3-3: 2013 and EN 55035: 2017.

It has also been independently tested and met the requirements for Phthalates and Total Lead Content in Computer and Electronics Accessories under California Proposition 65.

### How do I install HUE Intuition on my older Mac?

If you are using an older version of Mac OS X you may not be able to install HUE Intuition 2.0. Older versions of HUE Intuition can be downloaded from the HUE website. You will need to register the activation code on the back cover of this guide to access your software license and your copy of HUE Intuition 1.7. Please contact us through [huehd.com/contact](http://huehd.com/contact) if you need more information.

## FAQs

If you can't find the answer you're looking for, you can contact us via [huehd.com/contact](http://huehd.com/contact)

Please provide as much information as you can including order details, your operating system, and screen shots so that we can quickly identify a solution for you.

**For a full set of FAQs, tutorials and technical help, please visit [huehd.com/support](http://huehd.com/support)**



## HUE INTUITION SYSTEM REQUIREMENTS

**Windows:** Windows 10, 8, 7, Vista or XP

**Mac:** macOS, or Mac OS X 10.4.3 or later

USB 2.0 (USB 3.0 and 1.1 compatible)

A 16 bit (or higher) sound card is required for audio



## YOUR ACTIVATION CODE

### Get in touch and tell us your stories!

You can reach us via the contact link below or follow us on social media.